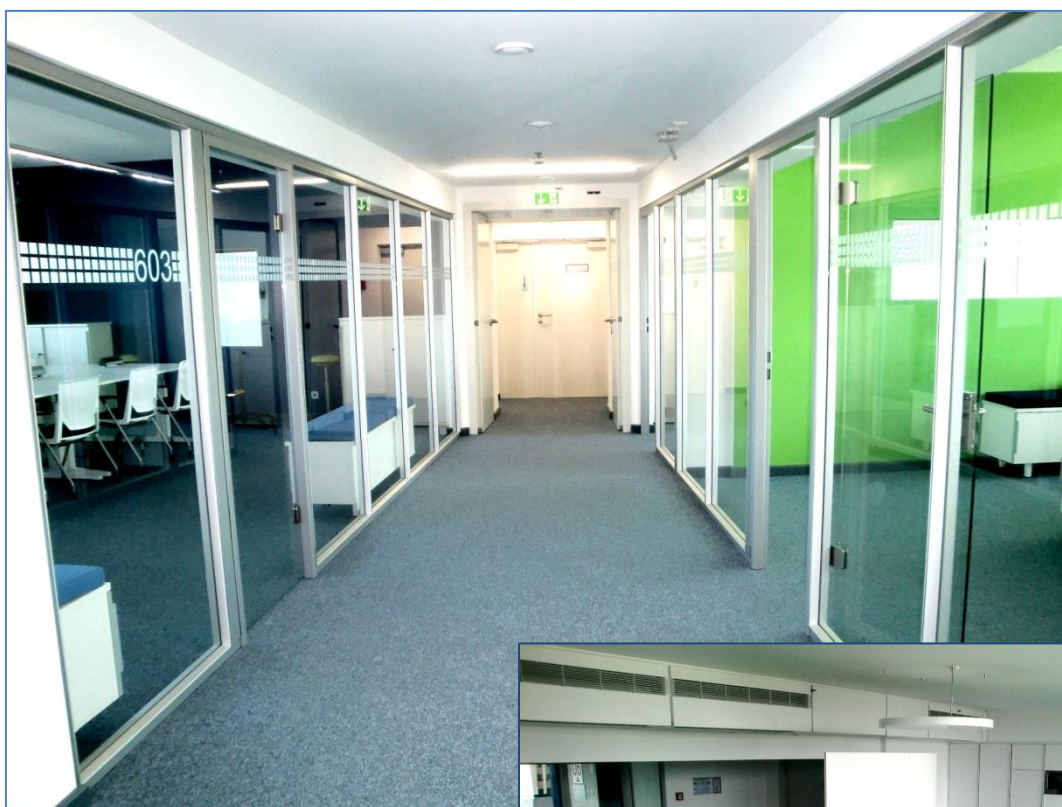


## Visitor Information



## Welcome to the Berlin Node!



Located at  
Ernst-Reuter-Platz 7,  
Telefunken-Hochhaus  
10587 Berlin

## The Berlin Node

The Berlin Node consists of six core partners (Deutsche Telekom AG, Siemens AG, SAP AG, Fraunhofer Gesellschaft e.V., DFKI gGmbH and TU Berlin) plus seven affiliate partners: Max Planck Institute for Informatics, Saarland University, TU Darmstadt - Center for Advanced Security Research Darmstadt (CASED), TU München, Karlsruhe Institute of Technology (KIT), EICT GmbH and Opera Software ASA with complimentary competencies fully committed to fulfill the ambitious goals of EIT ICT Labs.

Being among the leading R&D and economic hubs in European ICT, our partners in the Munich region will reinforce the Berlin Node. This affiliated hotspot includes

Siemens ICT corporate research and Technische Universität München with its associated institutes CDTM, UnternehmerTUM, and fortiss – strong partners in entrepreneurial education and innovation centres for cyber-physical systems.



## Key Persons

Berlin Node Director  
Dr. Ing. Udo Bub  
[udo.bub@ictlabs.eu](mailto:udo.bub@ictlabs.eu)

Dep. Node Director  
Dr. Kai Rose  
[kai.rose@eict.de](mailto:kai.rose@eict.de)

Third Person  
Name  
E-Mail

## Address

EIT ICT Labs Berlin  
Ernst-Reuter-Platz 7 / 6th floor  
10587 Berlin  
Germany  
[www.eit.ictlabs.eu](http://www.eit.ictlabs.eu)



### Arrival by train

*Berlin Hauptbahnhof railway station:* Take the Bus No. 245 heading towards S+U-Bahnhof Zoologischer Garten. Get off at bus stop Marchstraße. The bus departs every 10 minutes from Invalidenstraße (just north of the station) and the trip takes about 20 minutes.

### Arrival by airplane

#### ➤ From Tegel airport

Take bus X9 heading towards S+U-Bahnhof Zoologischer Garten and get off at U-Bahnhof Ernst-Reuter-Platz. It will take approximately 20 minutes.

#### ➤ From Schönefeld airport

Take the free shuttle bus to the S-Bahn station Flughafen Berlin-Schönefeld. From there, take the AirportExpress train (DB RE4 or DB RE5; heading towards Rathenow or Rostock (the AirportExpress departs approximately every 30 minutes). Get off at the Zoologischer Garten station. Next, take the U-Bahn line U2 heading towards Ruhleben and get off at Ernst-Reuter-Platz. Altogether, it will take approximately 45 minutes.

### Arrival by car

If you are travelling to Berlin by car, it is best to take the highway or Stadtautobahn. From the exit marked Kaiserdamm, it is approximately a 10-minute drive to Ernst-Reuter-Platz, depending on the traffic.

#### ➤ Arriving from the north via the A 111

Follow the A 111. This will automatically take you onto the A 100. Take the exit marked Kaiserdamm, and turn left into Knobelsdorffstraße. After crossing the Autobahn turn right into Sophie-Charlotten-Straße. Turn left into Kaiserdamm at the next traffic light. Follow Kaiserdamm / Bismarckstraße until you reach Ernst-Reuter-Platz.



#### ➤ Arriving from the south via the A 115 (Avus) or the A 100

If you are arriving via the A 115 (Avus), please continue to the intersection Dreieck Funkturm. From there, take the A 100 heading towards Hamburg. Take the exit marked Kaiserdamm, turn right into Knobelsdorffstraße and turn right again at the next traffic light into Sophie-Charlotten-Straße. At the next traffic light, turn left into Kaiserdamm. Follow Kaiserdamm / Bismarckstraße until you reach Ernst-Reuter-Platz.

### Parking

There are always plenty of (metered) parking slots at Bismarckstraße. Parking at Otto-Suhr-Allee is free of charge, but it can be a little bit further from Ernst-Reuter-Platz.

## **Berlin Node Team - Who is who**

### **Infodesk Reception**

e-mail: infodesk@eict.de  
phone: 34 50 66 90 – 0

### **Dr. Ing. Udo Bub**

Node Director Berlin  
e-mail: Udo.Bub@ictlabs.eu  
phone: 34 50 60 99 – 100

### **Dr. Kai Rose**

Deputy Node Director Berlin  
e-mail: Kai.Rose@eict.de  
phone: 34 50 66 90 - 120

### **Axel Hinze**

Controlling  
e-mail: Axel.Hinze@eict.de  
phone: 34 50 66 90 - 121

### **Christian Huder**

Node Berlin Management  
e-mail: Christian.Huder@eict.de  
phone: 34 50 66 90 – 122

### **Anja Mante**

Node Berlin Management  
e-mail: Anja.Mante@eict.de  
phone: 367 023 5 - 28

### **Dr. Klaus Beetz**

Business Coordinator  
e-mail: Klaus.Beez@eict.de  
phone: 34 50 66 90 – 200

### **Dr. Ariane Sutor**

Smart Energy Systems  
e-mail: Ariane.Sutor@ictlabs.eu  
phone: 34 50 66 90 - 131

### **Dr. Christian Müller**

Action Line Lead IMS  
e-mail: Christian.Mueller@eict.de

### **Corina Weber**

Business Development Manager  
e-mail: corina.weber@tu-berlin.de

**Skyline Cafeteria** (20th floor): monday to friday 7.30 am to 4.15 pm

from 7.30 am : fresh coffee, donuts, muffins etc.

from 8.30 am : breakfast

from 11.30 am to 3 pm : lunchtime

**e-mail:** skyline@studentenwerk-berlin.de or k.nachtwey@studentenwerk-berlin.de

## Hotels

### Hotel Gates

Knesebeckstr. 8-9

10623 Berlin

Phone: +49 30 · 31 1065 57

Fax: +49 30 · 31 22 06 0

[www.hotel-gates.com](http://www.hotel-gates.com)

Single room from: 75 € incl. breakfast



### Hotel Otto

Knesebeckstr. 10

10623 Berlin

Phone: +49 30 54 71 00 80

Fax: +49 30 54 71 00 888

[www.hotelotto.com](http://www.hotelotto.com)

Single room from: 85 € incl. breakfast



### Berlin Excelsior Hotel

Hardenbergstraße 14

10623 Berlin

Phone: +49 30 · 31 55-0

Fax: +49 30 31 55-0

[www.hotel-excelsior.de](http://www.hotel-excelsior.de)

Single room from: 75 € incl. breakfast



### Ringhotel Chateau Berlin

Knesebeckstr. 38 - 49

10719 Berlin

Phone: +49 30 889 1198 0

Fax: +49 30 889 1198 15

[www.hotel-chateau-berlin.de](http://www.hotel-chateau-berlin.de)

Single room from: 77 € incl. breakfast



art'otel Berlin  
Joachimstaler Str. 28  
10719 Berlin  
Phone: +49 3088 44 7 0  
Fax: +49 30 88 44 7-700  
[www.artotels.com](http://www.artotels.com)  
Single room from: 70 €



Motel One  
Kantstr. 7-11a  
10623 Berlin  
Phone: +49 30 315 1736 0  
Fax: +49 30 315 1736 10  
[www.motel-one.com](http://www.motel-one.com)  
Single room from: 65 € incl. breakfast



## Restaurants

Pasta & Basta (Italian)  
Knesebeckstraße 94  
10623 Berlin  
Phone: +49 30 / 312 59 82  
[www.pasta-e-basta-berlin.de](http://www.pasta-e-basta-berlin.de)  
low-price food



Satyam (Indian - vegetarian cuisine)  
Goethestraße 5  
10623 Berlin  
Phone: +49 30 / 31 80 61 11  
[www.mysatyam.de](http://www.mysatyam.de)  
low-price food



Mar y Sol (Spanish)  
Savignyplatz 5  
10623 Berlin  
Phone: +49 30 / 313 25 93  
[www.marysol-berlin.de](http://www.marysol-berlin.de)  
mid-price food range



Essen fassen (typical German - closed on monday)  
Knesebeckstraße 89  
10623 Berlin  
Phone: +49 30 / 22 43 81 18  
[www.essenfassen.com](http://www.essenfassen.com)  
upscale food-prices



Ristorante Aida (Italian)

Knesebeckstraße 83

10623 Berlin

Phone: +49 30 / 31 16 42 04

[www.aida-restaurant.de/](http://www.aida-restaurant.de/)

upscale food-prices



Buddha Republic (Indian - opens up at 4 pm)

Knesebeckstraße 88

10623 Berlin

Phone: +49 30 / 31 80 67 50

reservation by phone only!

[www.buddha-republic.com](http://www.buddha-republic.com)

mid-price food range



Belmondo (French)

Knesebeckstraße 93

10623 Berlin

Phone: +49 30 / 36 28 72 61

[www.belmondo-berlin.de](http://www.belmondo-berlin.de)

upscale food-prices



Dao (Thai Home-Style Kitchen)

Kantstraße 133

10625 Berlin

Phone: +49 30 / 37 59 14 14

[www.dao-restaurant.de](http://www.dao-restaurant.de)

mid-price food range



Mr. Hai (Vietnamese)

Savignyplatz 1

10623 Berlin

Phone: +49 30 / 37 59 12 00

[www.mrhai.de](http://www.mrhai.de)

mid-price food range



Mattone Cotto (Italian)

Knesebeckstraße 18

10623 Berlin

Phone: +49 30 / 312 93 81

[www.mattone-cotto.com](http://www.mattone-cotto.com)

mid-price food range

